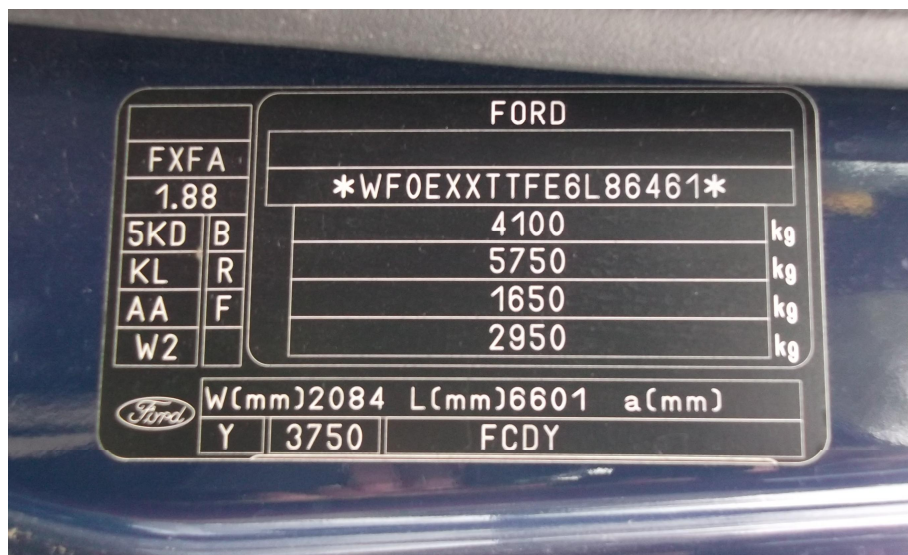


Maximum Authorised Mass & Payload



Information on vehicle weights is stamped on the V.I.N. plate

Vehicle	MAM (GVW)	MAM (GTW)	ULW (from weighbridge)	Max Payload (on vehicle)	Per passenger (inc luggage)	Trailer (min-max depending on load in bus)
17 seat ELWB Transit	4,100kg	5,750kg	2,751kg (mnfr data)	1,349kg	79kg (12st 7lbs)	1,650kg (- 2,924kg)
15 seat LWB Transit	3,700kg	6,000kg	2,419kg (mnfr data)	1,281kg	85kg (13st 6lbs)	2,300kg (- 3,506kg)

8st = 51kg, 10st = 64kg, 15 st = 95kg, 17st = 108kg